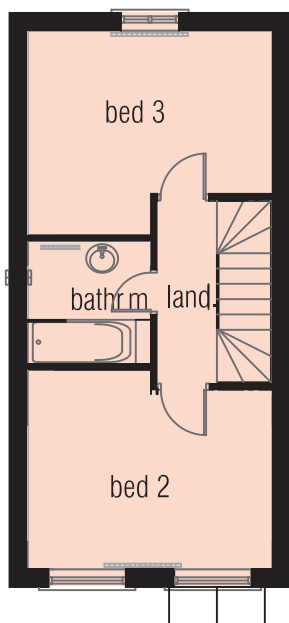


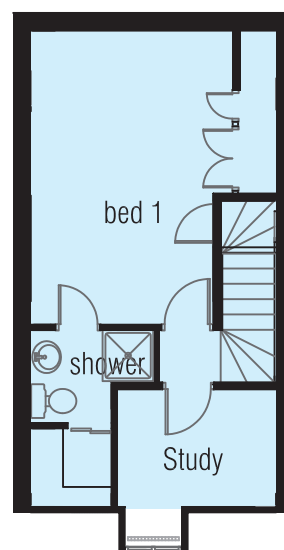
**Ground Floor**

Lounge 4.69m x 3.70m  
 Kitchen Diner 3.70m x 2.64m



**First Floor**

Bedroom Two 3.70m x 3.16m  
 Bedroom Three 3.81m x 3.71m



**Second Floor**

First Floor Bedroom 3.68m x 2.83m

*Boundaries/driveways/landscaping to plots are for illustration purposes only & must be confirmed on site. "We reserve the right to vary the specification at any time and purchasers should note the picture is an example of the house type and not a picture of the actual house. An example of the type of variation which can be made relates to brick and tile colours. Additional detailed plans and specifications are available for inspection for each plot at our sales office during working hours and purchasers are recommended to request sight of these prior to making their reservations". Room sizes for guidance only and must be confirmed on site.*

KT4 Snowden